

Rabbit anti-PLA2R antibody, clone SQab30362 (monoclonal)

Clone no. SQab30362

MONOSAN

---

|                           |  |
|---------------------------|--|
| Product name              | Rabbit anti-PLA2R antibody, clone SQab30362 (monoclonal) |
| Host                      | Rabbit   |
| Applications              | IHC-P  |
| Species reactivity        | Human  |
| Conjugate                 | -  |
| Immunogen                 | Synthetic peptide of Human PLA2R                         |
| Isotype                   | -  |
| Clonality                 | Monoclonal   |
| Clone number              | SQab30362  |
| Size                      | 100 ul   |
| Concentration             | n/a  |
| Format                    | Purification with Protein A.                             |
| Storage buffer            | PBS, 0.01% Sodium azide, 40% Glycerol and 0.05% BSA.     |
| Storage until expiry date | -20°C  |

FOR RESEARCH USE ONLY. NOT FOR USE IN DIAGNOSTIC PROCEDURES

Rabbit anti-PLA2R antibody, clone SQab30362 (monoclonal)

Clone no. SQab30362

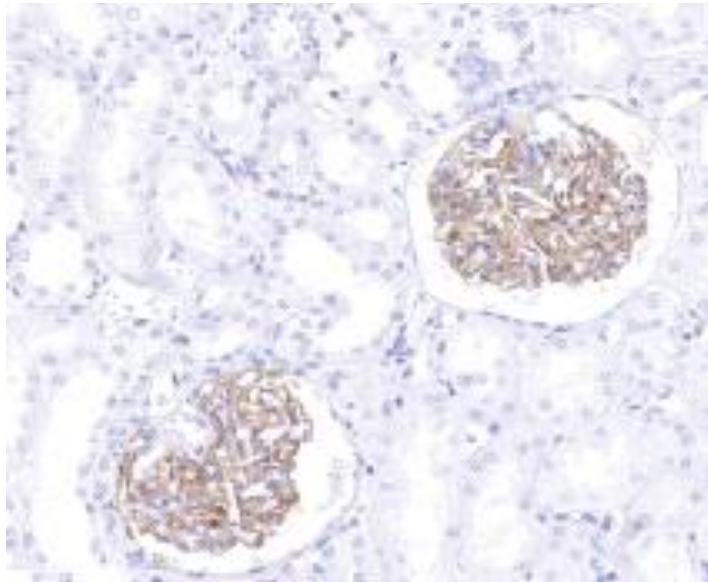
MONOSAN

---

**Additional info**

Application note: \* The dilutions indicate recommended starting dilutions and the optimal dilutions or concentrations should be determined by the scientist. Storage instruction: For continuous use, store undiluted antibody at 2-8°C for up to a week. For long-term storage, aliquot and store at -20°C. Storage in frost free freezers is not recommended. Avoid repeated freeze/thaw cycles. Suggest spin the vial prior to opening. The antibody solution should be gently mixed before use. Background: This gene represents a phospholipase A2 receptor. The encoded protein likely exists as both a transmembrane form and a soluble form. The transmembrane receptor may play a role in clearance of phospholipase A2, thereby inhibiting its action. Polymorphisms at this locus have been associated with susceptibility to idiopathic membranous nephropathy. Alternatively spliced transcript variants encoding different isoforms have been identified.[provided by RefSeq, Sep 2010]

## Images



Immunohistochemistry: Human glomeruli stained with anti-PLA2R antibody [SQab30362] at 1:100 dilution.

-

0

## References

1. -
2. -
3. -
4. -
5. -

FOR RESEARCH USE ONLY. NOT FOR USE IN DIAGNOSTIC PROCEDURES