

Rabbit anti-RIPK1 / RIP1 antibody, clone SQab22277 (monoclonal)

Clone no. SQab22277

MONOSAN

Product name	Rabbit anti-RIPK1 / RIP1 antibody, clone SQab22277 (monoclonal)
Host	Rabbit
Applications	IHC-P, WB
Species reactivity	Human
Conjugate	-
Immunogen	Synthetic peptide within aa. 200-300 of Human RIPK1 / RIP1.
Isotype	-
Clonality	Monoclonal
Clone number	SQab22277
Size	100 ul
Concentration	n/a
Format	Purification with Protein A.
Storage buffer	PBS, 0.01% Sodium azide, 40% Glycerol and 0.05%BSA.
Storage until expiry date	-20°C

FOR RESEARCH USE ONLY. NOT FOR USE IN DIAGNOSTIC PROCEDURES

Rabbit anti-RIPK1 / RIP1 antibody, clone SQab22277 (monoclonal)

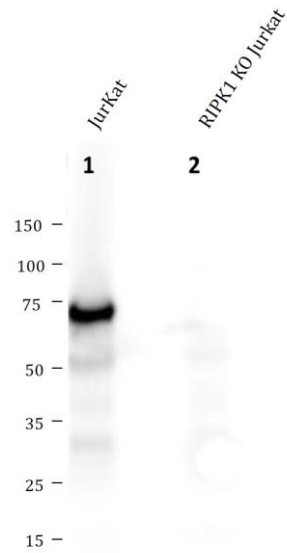
Clone no. SQab22277

MONOSAN

Additional info

Application note: IHC-P: Antigen Retrieval: Heat mediated was performed using Tris/EDTA buffer (pH 9.0). Incubate the samples at RT (18-25°C) for 30 min. * The dilutions indicate recommended starting dilutions and the optimal dilutions or concentrations should be determined by the scientist. Storage instruction: For continuous use, store undiluted antibody at 2-8°C for up to a week. For long-term storage, aliquot and store at -20°C or below. Storage in frost free freezers is not recommended. Avoid repeated freeze/thaw cycles. Suggest spin the vial prior to opening. The antibody solution should be gently mixed before use. Background: RIPK1 / RIP1 is a member of the receptor-interacting protein (RIP) family of serine/threonine protein kinases. The encoded protein plays a role in inflammation and cell death in response to tissue damage, pathogen recognition, and as part of developmental regulation. RIPK1/RIP3 kinase-mediated necrosis is referred to as necroptosis. Genetic disruption of this gene in mice results in death shortly after birth. [provided by RefSeq, Aug 2017]

Images



Western blot: Jurkat and RIPK1 KO Jurkat cell lysate stained with anti-RIPK1 / RIP1 antibody [SQab22277] at 1:2000 dilution.

-

0

References

- 1. -
- 2. -
- 3. -
- 4. -
- 5. -

FOR RESEARCH USE ONLY. NOT FOR USE IN DIAGNOSTIC PROCEDURES