

Rabbit anti-NUT / NUTM1 antibody, clone SQab22272 (monoclonal)

Clone no. SQab22272

MONOSAN

Product name	Rabbit anti-NUT / NUTM1 antibody, clone SQab22272 (monoclonal)
Host	Rabbit
Applications	IHC-P
Species reactivity	Human
Conjugate	-
Immunogen	A synthetic peptide corresponding to the sequence of Human NUT / NUTM1.
Isotype	-
Clonality	Monoclonal
Clone number	SQab22272
Size	100 ul
Concentration	n/a
Format	Purification with Protein A.
Storage buffer	PBS, 0.01% Sodium azide, 40% Glycerol and 0.05%BSA.
Storage until expiry date	-20°C

FOR RESEARCH USE ONLY. NOT FOR USE IN DIAGNOSTIC PROCEDURES

Rabbit anti-NUT / NUTM1 antibody, clone SQab22272 (monoclonal)

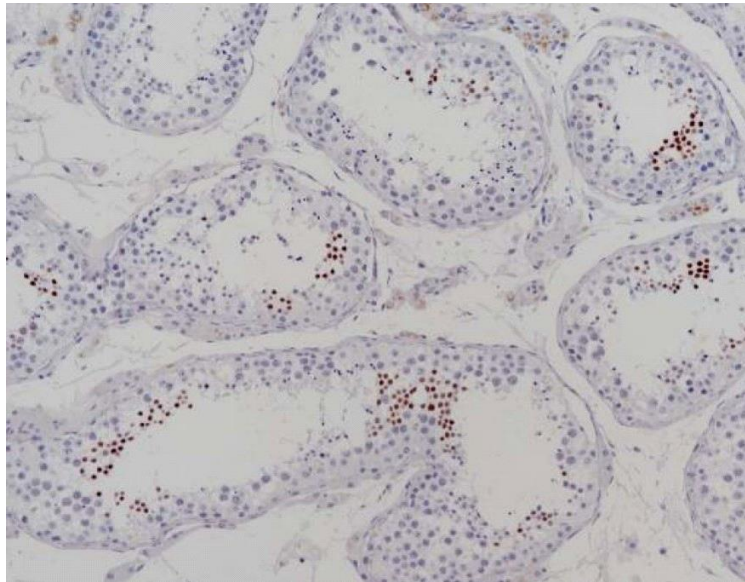
Clone no. SQab22272

MONOSAN

Additional info

Application note: IHC-P: Antigen Retrieval: Heat mediated was performed using Tris/EDTA buffer (pH 9.0). Incubate the samples at RT (18-25°C) for 30 min. * The dilutions indicate recommended starting dilutions and the optimal dilutions or concentrations should be determined by the scientist. Storage instruction: For continuous use, store undiluted antibody at 2-8°C for up to a week. For long-term storage, aliquot and store at -20°C or below. Storage in frost free freezers is not recommended. Avoid repeated freeze/thaw cycles. Suggest spin the vial prior to opening. The antibody solution should be gently mixed before use. Background: Predicted to be located in cytoplasm and nucleus. [provided by Alliance of Genome Resources, Apr 2022]

Images



Immunohistochemistry: Formalin/PFA-fixed and paraffin-embedded sections of Human testis tissue stained with anti-NUT / NUTM1 antibody [SQab22272]. Antigen Retrieval: Heat tissue section in Tris-EDTA buffer (pH 9.0).

-

0

References

1. -
2. -
3. -
4. -
5. -

FOR RESEARCH USE ONLY. NOT FOR USE IN DIAGNOSTIC PROCEDURES