

Rabbit anti-SDHB antibody, clone SQab20236 (monoclonal)

Clone no. SQab20236

MONOSAN

Product name	Rabbit anti-SDHB antibody, clone SQab20236 (monoclonal)
Host	Rabbit
Applications	IHC-P, WB
Species reactivity	Human
Conjugate	-
Immunogen	Synthetic peptide derived from Human SDHB.
Isotype	-
Clonality	Monoclonal
Clone number	SQab20236
Size	50 ul
Concentration	n/a
Format	Purification with Protein A.
Storage buffer	PBS, 0.01% Sodium azide, 40% Glycerol and 0.05% BSA.
Storage until expiry date	-20°C

FOR RESEARCH USE ONLY. NOT FOR USE IN DIAGNOSTIC PROCEDURES

Rabbit anti-SDHB antibody, clone SQab20236 (monoclonal)

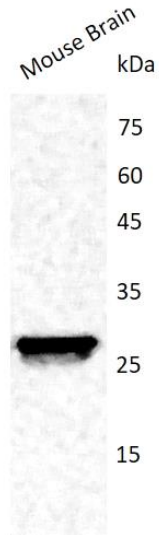
Clone no. SQab20236

MONOSAN

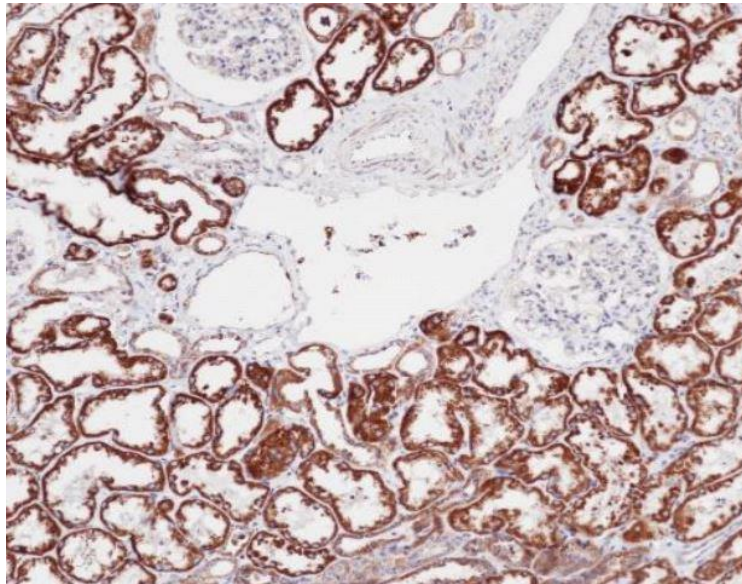
Additional info

Application note: IHC-P: Antigen Retrieval: Heat mediation was performed in Tris/EDTA buffer (pH 9.0), primary antibody incubate at RT (18°C - 25°C) for 30 minutes.* The dilutions indicate recommended starting dilutions and the optimal dilutions or concentrations should be determined by the scientist. Storage instruction: For continuous use, store undiluted antibody at 2-8°C for up to a week. For long-term storage, aliquot and store at -20°C. Storage in frost free freezers is not recommended. Avoid repeated freeze/thaw cycles. Suggest spin the vial prior to opening. The antibody solution should be gently mixed before use. Background: Complex II of the respiratory chain, which is specifically involved in the oxidation of succinate, carries electrons from FADH to CoQ. The complex is composed of four nuclear-encoded subunits and is localized in the mitochondrial inner membrane. The iron-sulfur subunit is highly conserved and contains three cysteine-rich clusters which may comprise the iron-sulfur centers of the enzyme. Sporadic and familial mutations in this gene result in paragangliomas and pheochromocytoma, and support a link between mitochondrial dysfunction and tumorigenesis. [provided by RefSeq, Jul 2008]

Images



Western blot: Mouse Brain stained with anti-SDHB antibody [SQab20236] at 1:1000 dilution.



Immunohistochemistry: Formalin/PFA-fixed and paraffin-embedded Human kidney tissue. Antigen Retrieval: Heat mediation was performed in Tris/EDTA buffer (pH 9.0). The tissue section was stained with anti-SDHB antibody [SQab20236].

References

1. -
2. -
3. -
4. -
5. -

FOR RESEARCH USE ONLY. NOT FOR USE IN DIAGNOSTIC PROCEDURES