

Rabbit anti-HMW Cytokeratin antibody, clone SQab20224 (monoclonal)

Clone no. SQab20224

MONOSAN

| | |
|---------------------------|--|
| Product name | Rabbit anti-HMW Cytokeratin antibody, clone SQab20224 (monoclonal) |
| Host | Rabbit |
| Applications | IHC-P |
| Species reactivity | Human |
| Conjugate | - |
| Immunogen | Synthetic peptide within aa. 200-300 of Human Cytokeratin 1 and synthetic peptide within aa. 490-590 of Human Cytokeratin 5. |
| Isotype | - |
| Clonality | Monoclonal |
| Clone number | SQab20224 |
| Size | 100 ul |
| Concentration | n/a |
| Format | Purification with Protein A. |
| Storage buffer | PBS, 0.01% Sodium azide, 40% Glycerol and 0.05% BSA. |
| Storage until expiry date | -20°C |

FOR RESEARCH USE ONLY. NOT FOR USE IN DIAGNOSTIC PROCEDURES

Rabbit anti-HMW Cytokeratin antibody, clone SQab20224 (monoclonal)

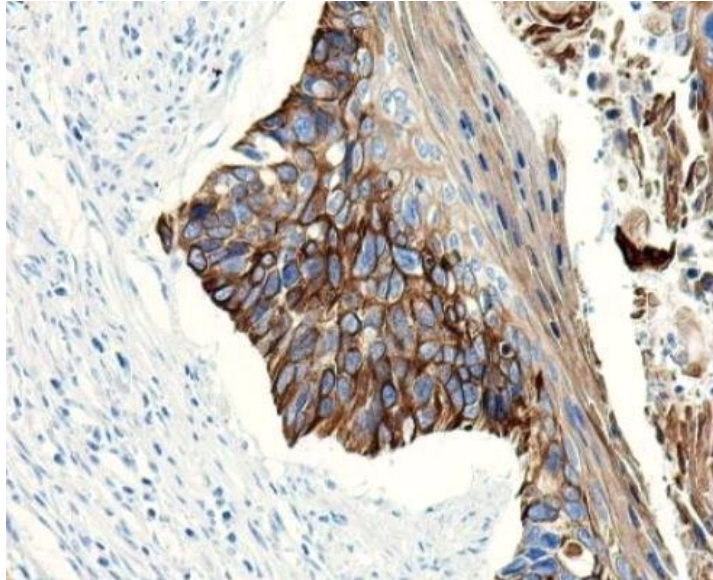
Clone no. SQab20224

MONOSAN

Additional info

Application note: IHC-P: Antigen Retrieval: Heat mediation was performed in Tris/EDTA buffer (pH 9.0), primary antibody incubate at RT (18°C - 25°C) for 30 minutes.* The dilutions indicate recommended starting dilutions and the optimal dilutions or concentrations should be determined by the scientist. Storage instruction: For continuous use, store undiluted antibody at 2-8°C for up to a week. For long-term storage, aliquot and store at -20°C. Storage in frost free freezers is not recommended. Avoid repeated freeze/thaw cycles. Suggest spin the vial prior to opening. The antibody solution should be gently mixed before use. Background: KRT1: The protein encoded by this gene is a member of the keratin gene family. The type II cytokeratins consist of basic or neutral proteins which are arranged in pairs of heterotypic keratin chains coexpressed during differentiation of simple and stratified epithelial tissues. This type II cytokeratin is specifically expressed in the spinous and granular layers of the epidermis with family member KRT10 and mutations in these genes have been associated with bullous congenital ichthyosiform erythroderma. The type II cytokeratins are clustered in a region of chromosome 12q12-q13. [provided by RefSeq, Jul 2008] KRT5: The protein encoded by this gene is a member of the keratin gene family. The type II cytokeratins consist of basic or neutral proteins which are arranged in pairs of heterotypic keratin chains coexpressed during differentiation of simple and stratified epithelial tissues. This type II cytokeratin is specifically expressed in the basal layer of the epidermis with family member KRT14. Mutations in these genes have been associated with a complex of diseases termed epidermolysis bullosa simplex. The type II cytokeratins are clustered in a region of chromosome 12q12-q13. [provided by RefSeq, Jul 2008]

Images



Immunohistochemistry: Formalin/PFA-fixed and paraffin-embedded Human esophagus carcinoma tissue. Antigen Retrieval: Heat mediation was performed in Tris/EDTA buffer (pH 9.0). The tissue section was stained with anti-HMW Cytokeratin antibody [SQab20224].

-

0

References

1. -
2. -
3. -
4. -
5. -

FOR RESEARCH USE ONLY. NOT FOR USE IN DIAGNOSTIC PROCEDURES