

Rabbit anti-RRM1 antibody, clone SQab20199 (monoclonal)

Clone no. SQab20199

MONOSAN

---

Product name	Rabbit anti-RRM1 antibody, clone SQab20199 (monoclonal)
Host	Rabbit
Applications	IHC-P, WB
Species reactivity	Human
Conjugate	-
Immunogen	Synthetic peptide within aa. 700-800 of Human RRM1.
Isotype	-
Clonality	Monoclonal
Clone number	SQab20199
Size	100 ul
Concentration	n/a
Format	Purification with Protein A.
Storage buffer	PBS, 0.01% Sodium azide, 40% Glycerol and 0.05% BSA.
Storage until expiry date	-20°C

FOR RESEARCH USE ONLY. NOT FOR USE IN DIAGNOSTIC PROCEDURES

Rabbit anti-RRM1 antibody, clone SQab20199 (monoclonal)

Clone no. SQab20199

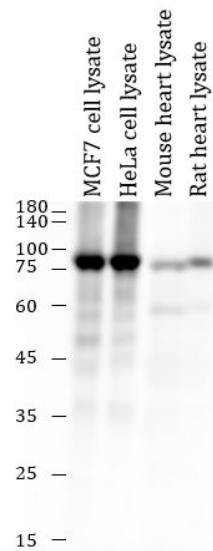
MONOSAN

---

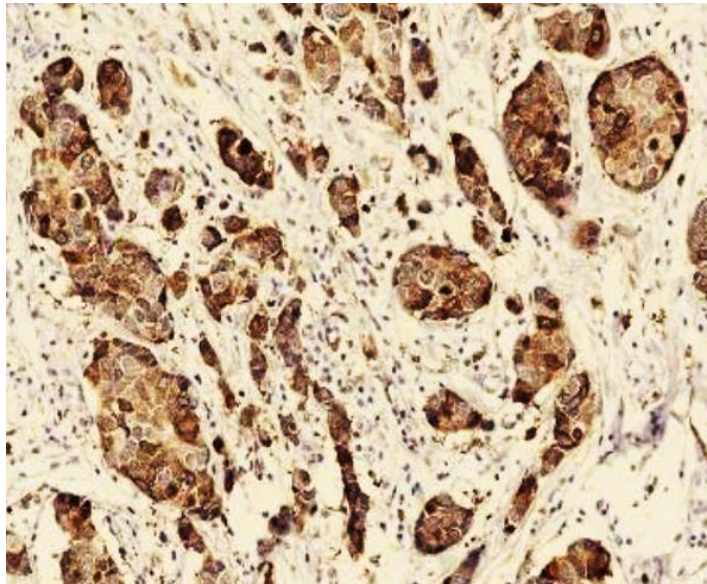
**Additional info**

Application note: IHC-P: Antigen Retrieval: Heat mediation was performed in Tris/EDTA buffer (pH 9.0).WB: for mouse and rat samples, maybe more antibody is needed, and mouse and rat samples were tested only by WB.\* The dilutions indicate recommended starting dilutions and the optimal dilutions or concentrations should be determined by the scientist.Storage instruction: For continuous use, store undiluted antibody at 2-8°C for up to a week. For long-term storage, aliquot and store at -20°C. Storage in frost free freezers is not recommended. Avoid repeated freeze/thaw cycles. Suggest spin the vial prior to opening. The antibody solution should be gently mixed before use.Background: This gene encodes the large and catalytic subunit of ribonucleotide reductase, an enzyme essential for the conversion of ribonucleotides into deoxyribonucleotides. A pool of available deoxyribonucleotides is important for DNA replication during S phase of the cell cycle as well as multiple DNA repair processes. Alternative splicing results in multiple transcript variants. [provided by RefSeq, Dec 2015]

## Images



Western blot: MCF7 cell lysate, HeLa cell lysate, Mouse heart lysate and Rat heart lysate stained with anti-RRM1 antibody [SQab20199] at 1:1000 dilution.



Immunohistochemistry: Formalin/PFA-fixed and paraffin-embedded Human breast carcinoma tissue. Antigen Retrieval: Heat mediation was performed in Tris/EDTA buffer (pH 9.0). The tissue section was stained with anti-RRM1 antibody [SQab20199] at 18°C - 25°C for 30 minutes.

## References

1. -
2. -
3. -
4. -
5. -

FOR RESEARCH USE ONLY. NOT FOR USE IN DIAGNOSTIC PROCEDURES