

Rabbit anti-CD2 antibody, clone SQab20192 (monoclonal)

Clone no. SQab20192

MONOSAN

Product name	Rabbit anti-CD2 antibody, clone SQab20192 (monoclonal)
Host	Rabbit
Applications	IHC-P, WB
Species reactivity	Human
Conjugate	-
Immunogen	Synthetic peptide around the N-terminus of Human CD2.
Isotype	-
Clonality	Monoclonal
Clone number	SQab20192
Size	100 ul
Concentration	n/a
Format	Purification with Protein A.
Storage buffer	PBS, 0.01% Sodium azide, 40% Glycerol and 0.05% BSA.
Storage until expiry date	-20°C

FOR RESEARCH USE ONLY. NOT FOR USE IN DIAGNOSTIC PROCEDURES

Rabbit anti-CD2 antibody, clone SQab20192 (monoclonal)

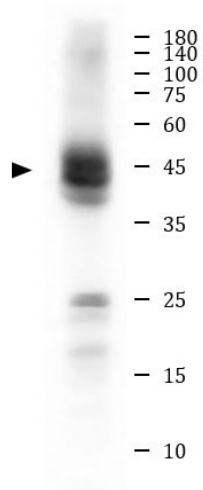
Clone no. SQab20192

MONOSAN

Additional info

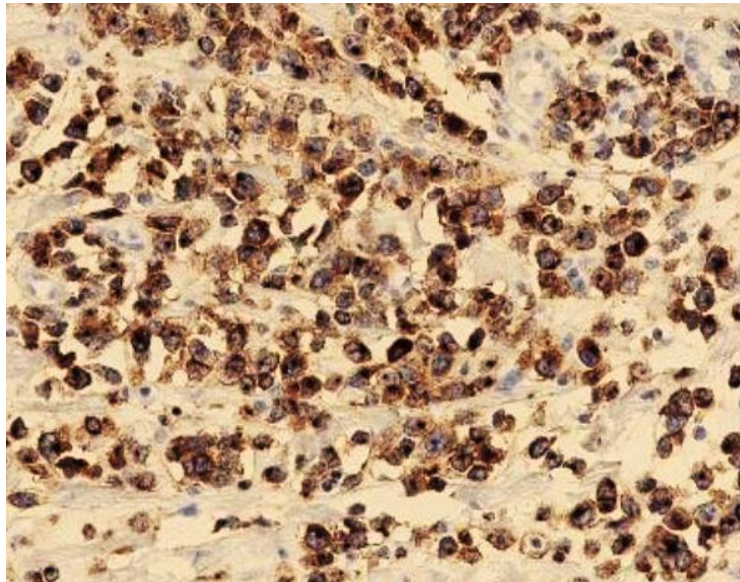
Application note: IHC-P: Antigen Retrieval: Heat mediation was performed in Tris/EDTA buffer (pH 9.0).* The dilutions indicate recommended starting dilutions and the optimal dilutions or concentrations should be determined by the scientist. Storage instruction: For continuous use, store undiluted antibody at 2-8°C for up to a week. For long-term storage, aliquot and store at -20°C. Storage in frost free freezers is not recommended. Avoid repeated freeze/thaw cycles. Suggest spin the vial prior to opening. The antibody solution should be gently mixed before use. Background: The protein encoded by this gene is a surface antigen found on all peripheral blood T-cells. The encoded protein interacts with LFA3 (CD58) on antigen presenting cells to optimize immune recognition. A locus control region (LCR) has been found in the 3' flanking sequence of this gene. [provided by RefSeq, Jun 2016]

Images



Jurkat

Western blot: 10 µg of Jurkat cell lysate stained with anti-CD2 antibody [SQab20192] at 1:1000 dilution.



Immunohistochemistry: Formalin/PFA-fixed and paraffin-embedded Human T-cell lymphoma tissue. Antigen Retrieval: Heat mediation was performed in Tris/EDTA buffer (pH 9.0). The tissue section was stained with anti-CD2 antibody [SQab20192] at 18°C - 25°C for 30 minutes.

References

- 1. -
- 2. -
- 3. -
- 4. -
- 5. -

FOR RESEARCH USE ONLY. NOT FOR USE IN DIAGNOSTIC PROCEDURES