

Rabbit anti-Cytokeratin 17 antibody, clone SQab19157 (monoclonal)

Clone no. SQab19157

MONOSAN

---

Product name	Rabbit anti-Cytokeratin 17 antibody, clone SQab19157 (monoclonal)
Host	Rabbit
Applications	IHC-P
Species reactivity	Human
Conjugate	-
Immunogen	Synthetic peptide within aa. 400-500 of Human Cytokeratin 17.
Isotype	-
Clonality	Monoclonal
Clone number	SQab19157
Size	100 ul
Concentration	n/a
Format	Purification with Protein A.
Storage buffer	PBS, 0.01% Sodium azide, 40% Glycerol and 0.05% BSA.
Storage until expiry date	-20°C

FOR RESEARCH USE ONLY. NOT FOR USE IN DIAGNOSTIC PROCEDURES

Rabbit anti-Cytokeratin 17 antibody, clone SQab19157 (monoclonal)

Clone no. SQab19157

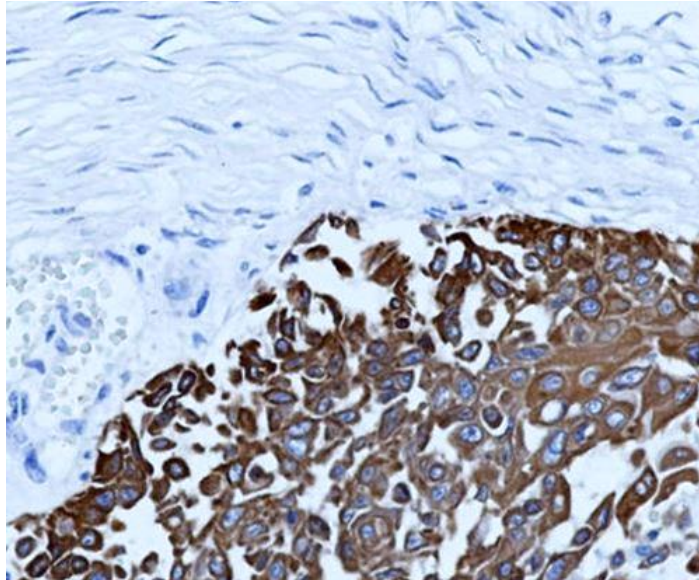
MONOSAN

---

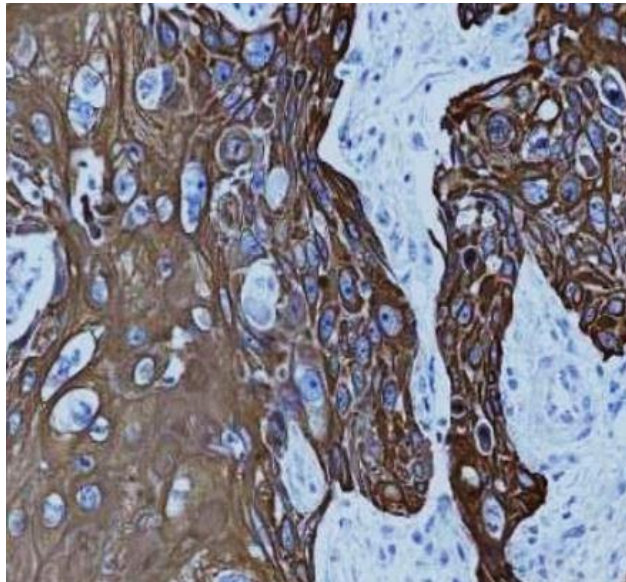
**Additional info**

Application note: IHC-P: Antigen Retrieval: Heat mediation was performed in Tris/EDTA buffer (pH 9.0), primary antibody incubate at RT (18°C-25°C) for 30 minutes.\* The dilutions indicate recommended starting dilutions and the optimal dilutions or concentrations should be determined by the scientist. Storage instruction: For continuous use, store undiluted antibody at 2-8°C for up to a week. For long-term storage, aliquot and store at -20°C. Storage in frost free freezers is not recommended. Avoid repeated freeze/thaw cycles. Suggest spin the vial prior to opening. The antibody solution should be gently mixed before use. Background: This gene encodes the type I intermediate filament chain keratin 17, expressed in nail bed, hair follicle, sebaceous glands, and other epidermal appendages. Mutations in this gene lead to Jackson-Lawler type pachyonychia congenita and steatocystoma multiplex. [provided by RefSeq, Aug 2008]

Images



Immunohistochemistry: Paraffin-embedded Human lung carcinoma tissue stained with anti-Cytokeratin 17 antibody [SQab19157].



Immunohistochemistry: Formalin/PFA-fixed and paraffin-embedded Human esophageal carcinoma tissue stained with anti-Cytokeratin 17 antibody [SQab19157]. Antigen Retrieval: Heat mediation was performed in Tris/EDTA buffer (pH 9.0).

References

1. -
2. -
3. -
4. -
5. -

FOR RESEARCH USE ONLY. NOT FOR USE IN DIAGNOSTIC PROCEDURES