

Rabbit anti-Cytokeratin 14 antibody, clone SQab18101 (monoclonal)

Clone no. SQab18101

MONOSAN

Product name	Rabbit anti-Cytokeratin 14 antibody, clone SQab18101 (monoclonal)
Host	Rabbit
Applications	IHC-P
Species reactivity	Human
Conjugate	-
Immunogen	Synthetic peptide within aa. 372-472 of Human Cytokeratin 14.
Isotype	-
Clonality	Monoclonal
Clone number	SQab18101
Size	100 ul
Concentration	n/a
Format	Purification with Protein A.
Storage buffer	PBS, 0.01% Sodium azide, 40% Glycerol and 0.05% BSA.
Storage until expiry date	-20°C

FOR RESEARCH USE ONLY. NOT FOR USE IN DIAGNOSTIC PROCEDURES

Rabbit anti-Cytokeratin 14 antibody, clone SQab18101 (monoclonal)

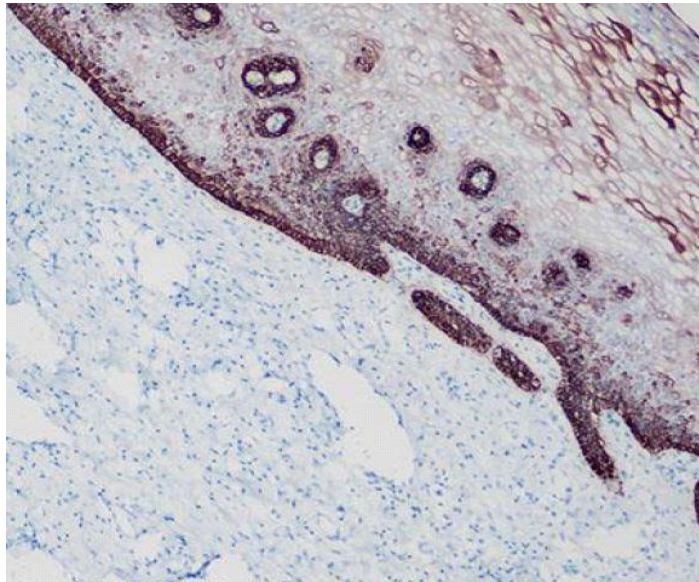
Clone no. SQab18101

MONOSAN

Additional info

Application note: IHC-P: Antigen Retrieval: Heat mediated was performed using Tris/EDTA buffer (pH 9.0), primary antibody incubate at RT for 30 min.* The dilutions indicate recommended starting dilutions and the optimal dilutions or concentrations should be determined by the scientist. Storage instruction: For continuous use, store undiluted antibody at 2-8°C for up to a week. For long-term storage, aliquot and store at -20°C. Storage in frost free freezers is not recommended. Avoid repeated freeze/thaw cycles. Suggest spin the vial prior to opening. The antibody solution should be gently mixed before use. Background: This gene encodes a member of the keratin family, the most diverse group of intermediate filaments. This gene product, a type I keratin, is usually found as a heterotetramer with two keratin 5 molecules, a type II keratin. Together they form the cytoskeleton of epithelial cells. Mutations in the genes for these keratins are associated with epidermolysis bullosa simplex. At least one pseudogene has been identified at 17p12-p11. [provided by RefSeq, Jul 2008]

Images



Immunohistochemistry: Formalin-fixed and paraffin-embedded esophagus tissue stained with anti-Cytokeratin 14 antibody [SQab18101]. Antigen Retrieval: Heat mediated was performed using Tris/EDTA buffer (pH 9.0).

0

0

References

1. -
2. -
3. -
4. -
5. -

FOR RESEARCH USE ONLY. NOT FOR USE IN DIAGNOSTIC PROCEDURES