

Rabbit anti-Ki-67 antibody, clone SQab1897 (monoclonal)

Clone no. SQab1897

MONOSAN

Product name	Rabbit anti-Ki-67 antibody, clone SQab1897 (monoclonal)
Host	Rabbit
Applications	IHC-P
Species reactivity	Human
Conjugate	-
Immunogen	Synthetic peptide within aa. 1000-1100 of Human Ki-67.
Isotype	-
Clonality	Monoclonal
Clone number	SQab1897
Size	100 ul
Concentration	n/a
Format	Purification with Protein A.
Storage buffer	PBS, 0.01% Sodium azide, 40% Glycerol and 0.05% BSA.
Storage until expiry date	-20°C

FOR RESEARCH USE ONLY. NOT FOR USE IN DIAGNOSTIC PROCEDURES

Rabbit anti-Ki-67 antibody, clone SQab1897 (monoclonal)

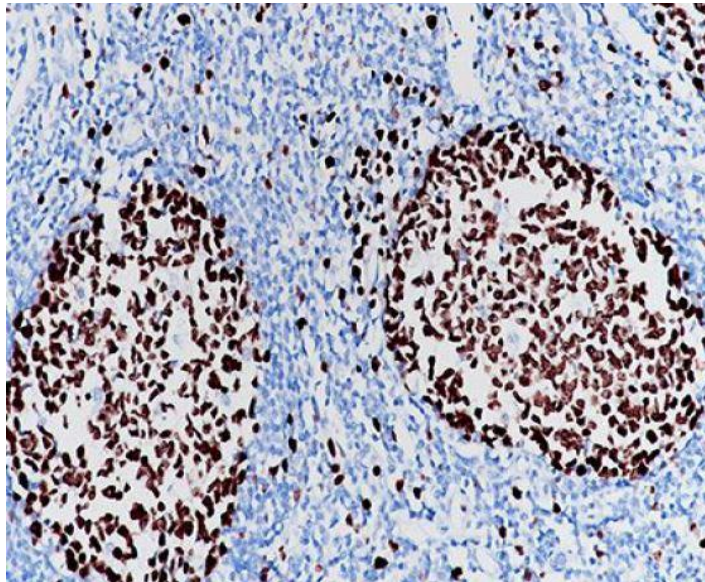
Clone no. SQab1897

MONOSAN

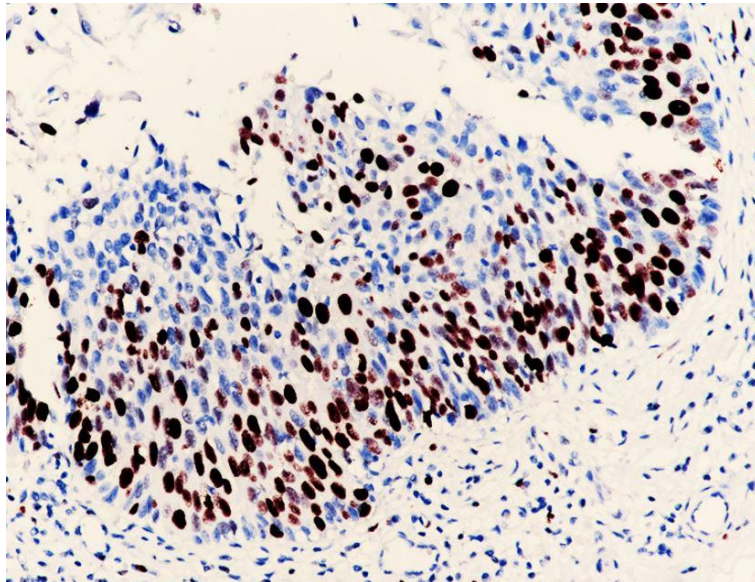
Additional info

Application note: IHC-P: Antigen Retrieval: Heat mediation was performed using Tris/EDTA buffer (pH 9.0), primary antibody incubate at RT for 30 min.* The dilutions indicate recommended starting dilutions and the optimal dilutions or concentrations should be determined by the scientist. Storage instruction: For continuous use, store undiluted antibody at 2-8°C for up to a week. For long-term storage, aliquot and store at -20°C. Storage in frost free freezers is not recommended. Avoid repeated freeze/thaw cycles. Suggest spin the vial prior to opening. The antibody solution should be gently mixed before use. Background: Ki-67 is a nuclear protein. It is associated with and may be necessary for cellular proliferation. Alternatively spliced transcript variants have been described. A related pseudogene exists on chromosome X. [provided by RefSeq, Mar 2009]

Images



Immunohistochemistry: Formalin-fixed and paraffin-embedded Human tonsil tissue stained with anti-Ki-67 antibody [SQab1897]. Antigen Retrieval: Heat mediation was performed using Tris/EDTA buffer (pH 9.0).



Immunohistochemistry: Formalin-fixed and paraffin-embedded Human esophageal cancer tissue stained with anti-Ki-67 antibody [SQab1897]. Antigen Retrieval: Heat mediation was performed using Tris/EDTA buffer (pH 9.0).

References

1. -
2. -
3. -
4. -
5. -

FOR RESEARCH USE ONLY. NOT FOR USE IN DIAGNOSTIC PROCEDURES