

Rabbit anti-DOG1 antibody, clone SQab1739 (monoclonal)

Clone no. SQab1739

MONOSAN

| | |
|---------------------------|---|
| Product name | Rabbit anti-DOG1 antibody, clone SQab1739 (monoclonal) |
| Host | Rabbit |
| Applications | IHC-P |
| Species reactivity | Human |
| Conjugate | - |
| Immunogen | Synthetic peptide around the C-terminus of Human DOG-1. |
| Isotype | - |
| Clonality | Monoclonal |
| Clone number | SQab1739 |
| Size | 100 ul |
| Concentration | n/a |
| Format | Purification with Protein A. |
| Storage buffer | PBS, 0.01% Sodium azide, 40% Glycerol and 0.05% BSA. |
| Storage until expiry date | -20°C |

FOR RESEARCH USE ONLY. NOT FOR USE IN DIAGNOSTIC PROCEDURES

Rabbit anti-DOG1 antibody, clone SQab1739 (monoclonal)

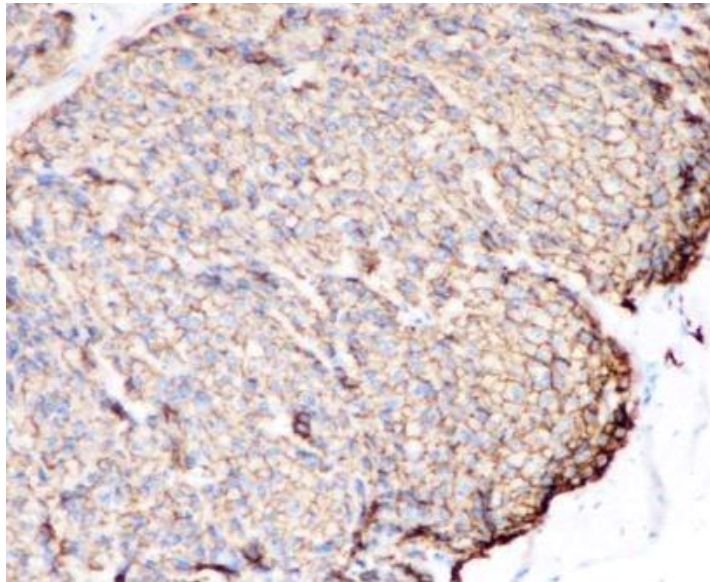
Clone no. SQab1739

MONOSAN

Additional info

Application note: IHC-P: Antigen Retrieval: Boil tissue section in Tris/EDTA buffer (pH 9.0).* The dilutions indicate recommended starting dilutions and the optimal dilutions or concentrations should be determined by the scientist. Storage instruction: For continuous use, store undiluted antibody at 2-8°C for up to a week. For long-term storage, aliquot and store at -20°C. Storage in frost free freezers is not recommended. Avoid repeated freeze/thaw cycles. Suggest spin the vial prior to opening. The antibody solution should be gently mixed before use. Background:

Images



Immunohistochemistry: Formalin-fixed and paraffin-embedded Human GIST tissue stained with anti-DOG1 antibody [SQab1739] at 1:200. Antigen Retrieval: Boil tissue section in Tris/EDTA buffer (pH 9.0).

-

0

References

1. -
2. -
3. -
4. -
5. -

FOR RESEARCH USE ONLY. NOT FOR USE IN DIAGNOSTIC PROCEDURES