

Rabbit anti-CDX2 antibody, clone SQab1733 (monoclonal)

Clone no. SQab1733

MONOSAN

Product name	Rabbit anti-CDX2 antibody, clone SQab1733 (monoclonal)
Host	Rabbit
Applications	IHC-P, WB
Species reactivity	Human
Conjugate	-
Immunogen	Synthetic peptide around the N-terminus of Human CDX2.
Isotype	-
Clonality	Monoclonal
Clone number	SQab1733
Size	100 ul
Concentration	n/a
Format	Purification with Protein A.
Storage buffer	PBS, 0.01% Sodium azide, 40% Glycerol and 0.05% BSA.
Storage until expiry date	-20°C

FOR RESEARCH USE ONLY. NOT FOR USE IN DIAGNOSTIC PROCEDURES

Rabbit anti-CDX2 antibody, clone SQab1733 (monoclonal)

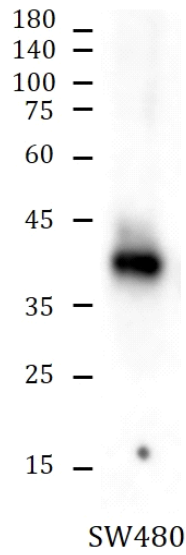
Clone no. SQab1733

MONOSAN

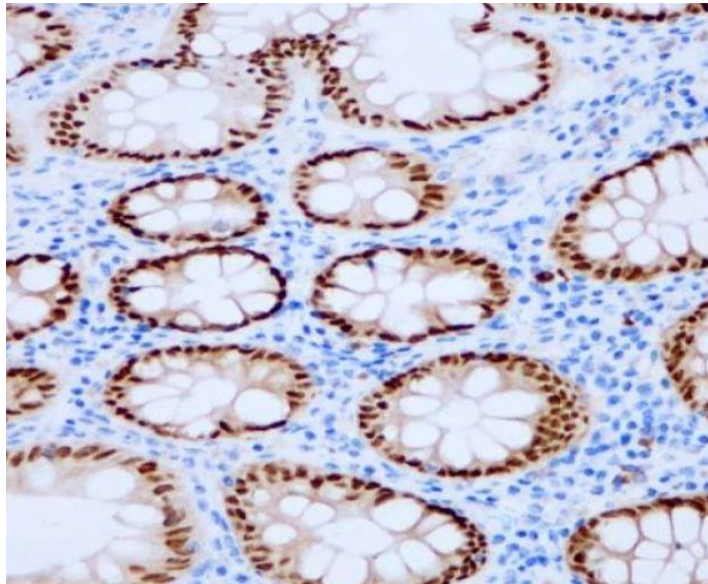
Additional info

Application note: IHC-P: Antigen Retrieval: Boil tissue section in Tris/EDTA buffer (pH 9.0).* The dilutions indicate recommended starting dilutions and the optimal dilutions or concentrations should be determined by the scientist. Storage instruction: For continuous use, store undiluted antibody at 2-8°C for up to a week. For long-term storage, aliquot and store at -20°C. Storage in frost free freezers is not recommended. Avoid repeated freeze/thaw cycles. Suggest spin the vial prior to opening. The antibody solution should be gently mixed before use. Background: This gene is a member of the caudal-related homeobox transcription factor gene family. The encoded protein is a major regulator of intestine-specific genes involved in cell growth and differentiation. This protein also plays a role in early embryonic development of the intestinal tract. Aberrant expression of this gene is associated with intestinal inflammation and tumorigenesis. [provided by RefSeq, Jan 2012]

Images



Western blot: SW480 cell lysate stained with anti-CDX2 antibody [SQab1733] at 1:1000 dilution.



Immunohistochemistry: Formalin-fixed and paraffin-embedded Human colon tissue stained with anti-CDX2 antibody [SQab1733] at 1:200. Antigen Retrieval: Boil tissue section in Tris/EDTA buffer (pH 9.0).

References

1. -
2. -
3. -
4. -
5. -

FOR RESEARCH USE ONLY. NOT FOR USE IN DIAGNOSTIC PROCEDURES