

Rabbit anti-Desmin antibody, clone SQab1722 (monoclonal)

Clone no. SQab1722

MONOSAN

---

Product name	Rabbit anti-Desmin antibody, clone SQab1722 (monoclonal)
Host	Rabbit
Applications	IHC-P, WB
Species reactivity	Human, Mouse
Conjugate	-
Immunogen	Synthetic peptide around the C-terminus of Desmin.
Isotype	-
Clonality	Monoclonal
Clone number	SQab1722
Size	100 ul
Concentration	n/a
Format	Affinity purification with immunogen.
Storage buffer	PBS, 0.01% Sodium azide, 40% Glycerol and 0.05% BSA.
Storage until expiry date	-20°C

FOR RESEARCH USE ONLY. NOT FOR USE IN DIAGNOSTIC PROCEDURES

Rabbit anti-Desmin antibody, clone SQab1722 (monoclonal)

Clone no. SQab1722

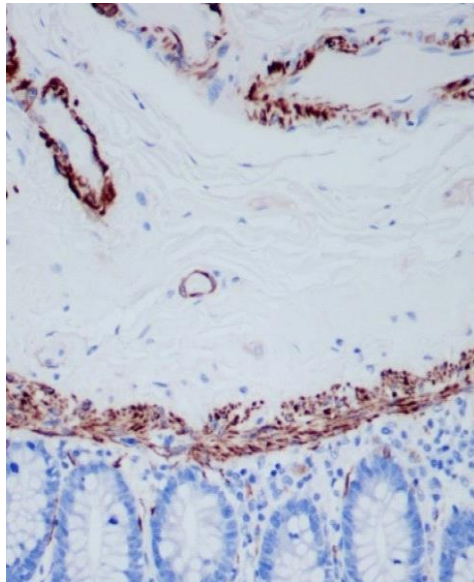
MONOSAN

---

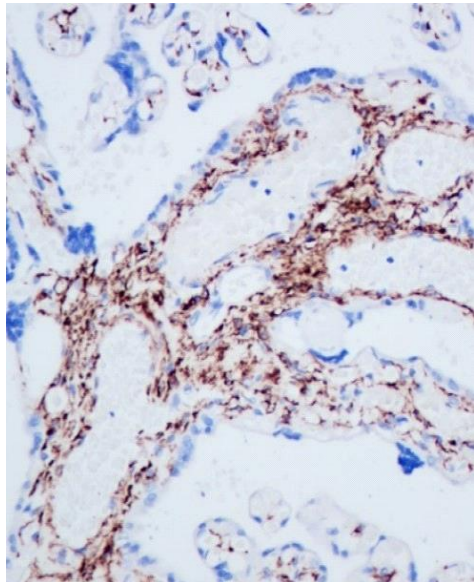
**Additional info**

Application note: IHC-P: Antigen Retrieval: Heat mediation was performed using Tris/EDTA buffer (pH 9.0)\* The dilutions indicate recommended starting dilutions and the optimal dilutions or concentrations should be determined by the scientist. Storage instruction: For continuous use, store undiluted antibody at 2-8°C for up to a week. For long-term storage, aliquot and store at -20°C. Storage in frost free freezers is not recommended. Avoid repeated freeze/thaw cycles. Suggest spin the vial prior to opening. The antibody solution should be gently mixed before use. Background: Desmin is a muscle-specific class III intermediate filament. Homopolymers of this protein form a stable intracytoplasmic filamentous network connecting myofibrils to each other and to the plasma membrane. Mutations in this gene are associated with desmin-related myopathy, a familial cardiac and skeletal myopathy (CSM), and with distal myopathies. [provided by RefSeq, Jul 2008]

## Images



Immunohistochemistry: Formalin-fixed and paraffin-embedded Human colon tissue stained with anti-Desmin antibody [SQab1722] at 1:8000 dilution.



Immunohistochemistry: Formalin-fixed and paraffin-embedded Human placenta tissue stained with anti-Desmin antibody [SQab1722] at 1:8000 dilution.

## References

1. -
2. -
3. -
4. -
5. -

FOR RESEARCH USE ONLY. NOT FOR USE IN DIAGNOSTIC PROCEDURES