

Rabbit anti-Vimentin antibody, clone SQab1721 (monoclonal)

Clone no. SQab1721

MONOSAN

Product name	Rabbit anti-Vimentin antibody, clone SQab1721 (monoclonal)
Host	Rabbit
Applications	FC, ICC/IF, IHC-fr, IHC-P, IP, WB
Species reactivity	Human, Rat
Conjugate	-
Immunogen	Synthetic peptide around the C-terminus of Vimentin
Isotype	-
Clonality	Monoclonal
Clone number	SQab1721
Size	100 ul
Concentration	n/a
Format	Affinity purification with immunogen.
Storage buffer	PBS, 0.01% Sodium azide, 40% Glycerol and 0.05% BSA.
Storage until expiry date	-20°C

FOR RESEARCH USE ONLY. NOT FOR USE IN DIAGNOSTIC PROCEDURES

Rabbit anti-Vimentin antibody, clone SQab1721 (monoclonal)

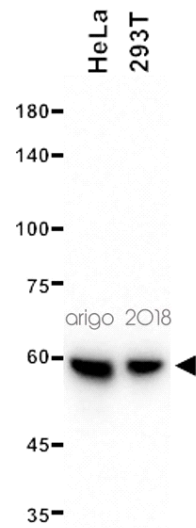
Clone no. SQab1721

MONOSAN

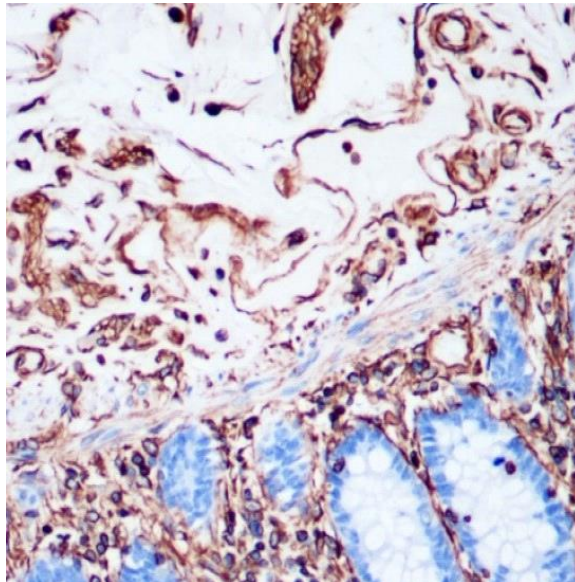
Additional info

Application note: IHC-P: Antigen retrieval: Heat mediated was performed using Tris/EDTA buffer pH 9.0 IHC-Fr: guaranteed based on publication PMID: 35011683 * The dilutions indicate recommended starting dilutions and the optimal dilutions or concentrations should be determined by the scientist. Storage instruction: For continuous use, store undiluted antibody at 2-8°C for up to a week. For long-term storage, aliquot and store at -20°C. Storage in frost free freezers is not recommended. Avoid repeated freeze/thaw cycles. Suggest spin the vial prior to opening. The antibody solution should be gently mixed before use. Background: Vimentin is a type III intermediate filament protein. Intermediate filaments, along with microtubules and actin microfilaments, make up the cytoskeleton. The encoded protein is responsible for maintaining cell shape and integrity of the cytoplasm, and stabilizing cytoskeletal interactions. This protein is involved in neuritogenesis and cholesterol transport and functions as an organizer of a number of other critical proteins involved in cell attachment, migration, and signaling. Bacterial and viral pathogens have been shown to attach to this protein on the host cell surface. Mutations in this gene are associated with congenital cataracts in human patients. [provided by RefSeq, Aug 2017]

Images



Western blot: 20 µg of HeLa and 293T cell lysates stained with anti-Vimentin antibody [SQab1721] at 1:1000 dilution.



Immunohistochemistry: Formalin-fixed and paraffin-embedded Human colon tissue stained with anti-Vimentin antibody [SQab1721] at 1:1000 dilution.

References

1. -
2. -
3. -
4. -
5. -

FOR RESEARCH USE ONLY. NOT FOR USE IN DIAGNOSTIC PROCEDURES