

Rabbit anti-CD274 / PD-L1 antibody, clone SQab1716 (monoclonal)

Clone no. SQab1716

MONOSAN

---

Product name	Rabbit anti-CD274 / PD-L1 antibody, clone SQab1716 (monoclonal)
Host	Rabbit
Applications	FC, ICC/IF, IHC-P, IP
Species reactivity	Human
Conjugate	-
Immunogen	Recombinant protein around aa. 19-239 (extracellular) of Human CD274 / PD-L1.
Isotype	-
Clonality	Monoclonal
Clone number	SQab1716
Size	100 ul
Concentration	n/a
Format	Purification with Protein A.
Storage buffer	PBS, 0.01% Sodium azide, 40% Glycerol and 0.05% BSA.
Storage until expiry date	-20°C

FOR RESEARCH USE ONLY. NOT FOR USE IN DIAGNOSTIC PROCEDURES

## Rabbit anti-CD274 / PD-L1 antibody, clone SQab1716 (monoclonal)

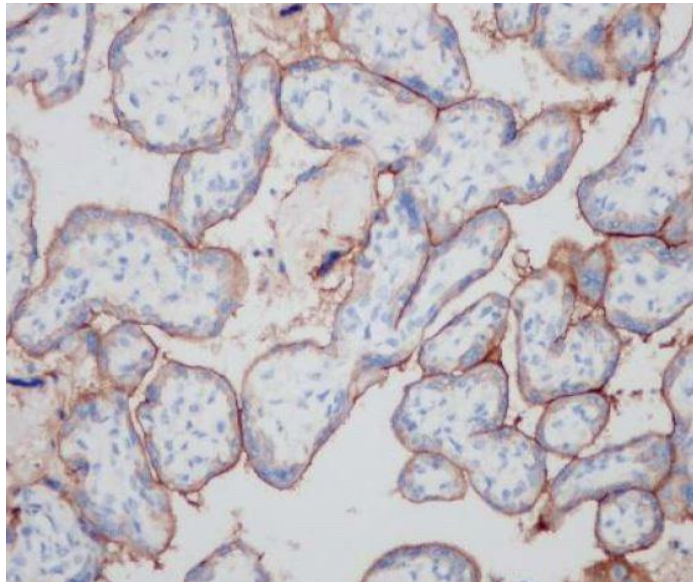
Clone no. SQab1716

MONOSAN

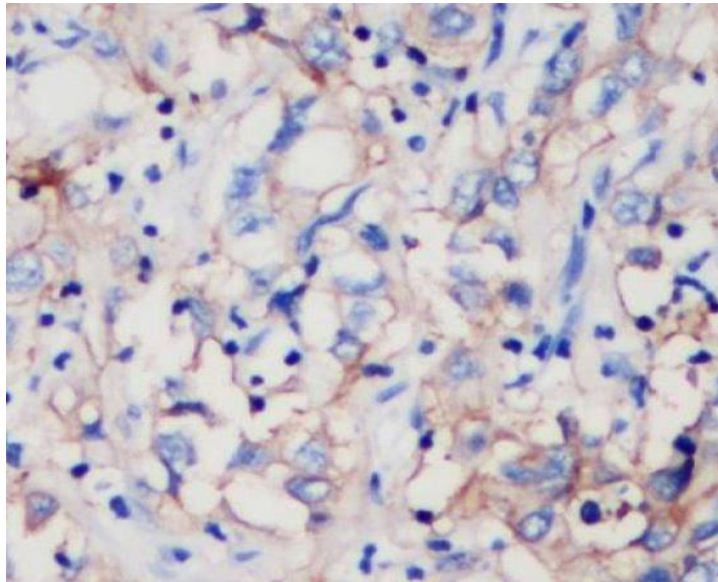
**Additional info**

Application note: IHC-P: Antigen Retrieval: Boil tissue section in Tris/EDTA buffer (pH 9.0).\* The dilutions indicate recommended starting dilutions and the optimal dilutions or concentrations should be determined by the scientist. Storage instruction: For continuous use, store undiluted antibody at 2-8°C for up to a week. For long-term storage, aliquot and store at -20°C. Storage in frost free freezers is not recommended. Avoid repeated freeze/thaw cycles. Suggest spin the vial prior to opening. The antibody solution should be gently mixed before use. Background: CD274 / PD-L1 is an immune inhibitory receptor ligand. It is expressed by hematopoietic and non-hematopoietic cells, such as T cells and B cells and various types of tumor cells. The encoded protein is a type I transmembrane protein that has immunoglobulin V-like and C-like domains. Interaction of this ligand with its receptor inhibits T-cell activation and cytokine production. During infection or inflammation of normal tissue, this interaction is important for preventing autoimmunity by maintaining homeostasis of the immune response. In tumor microenvironments, this interaction provides an immune escape for tumor cells through cytotoxic T-cell inactivation. Expression of this gene in tumor cells is considered to be prognostic in many types of human malignancies, including colon cancer and renal cell carcinoma. Alternative splicing results in multiple transcript variants. [provided by RefSeq, Sep 2015]

Images



Immunohistochemistry: Formalin/PFA-fixed and paraffin-embedded sections of Human placenta tissue stained with anti-CD274 / PD-L1 antibody [SQab1716] at 1:200 dilution. Antigen Retrieval: Boil tissue section in Tris/EDTA buffer (pH 9.0).



Immunohistochemistry: Formalin/PFA-fixed and paraffin-embedded sections of Human hepatocellular carcinoma tissue stained with anti-CD274 / PD-L1 antibody [SQab1716] at 1:200 dilution. Antigen Retrieval: Boil tissue section in Tris/EDTA buffer (pH 9.0).

References

1. -
2. -
3. -
4. -
5. -

FOR RESEARCH USE ONLY. NOT FOR USE IN DIAGNOSTIC PROCEDURES